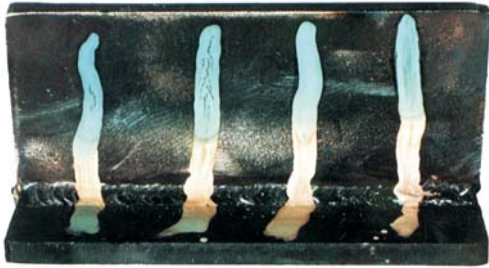


COLOTEMP®

Irreversible Colour Change Crayons

TEST EXAMPLE OF CHANGE



When applied to pre-heated surfaces, if colour change takes place:-

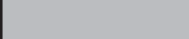


- (a) within 1-2 seconds, the temperature is within +/- 5°C of its rating;
- (b) instantaneously, the temperature is higher than its rating;
- (c) after two seconds, the temperature is below its rating.






MAIN APPLICATIONS OF IRREVERSIBLE CRAYONS

- Paper
- Rubber
- Train Body Assembly
- Plastics
- Zinc Foundries
- Aluminium
- Processing
- Glass Production
- Enamelling
- Chemical
- Electrical Industries...
- and many more

Original colours and changes are illustrated in the chart below:

| STANDARD PRODUCTS | | MINIMUM ORDER 1 BOX | | |
|-------------------|---|--------------------------|-------------|-------------|
| REF | INITIAL COLOUR | COLOUR CHANGES AS BELOW: | | |
| 120 |  | 120°C/248°F | | |
| 245 |  | 245°C/473°F | 335°C/635°F | 505°C/941°F |
| 600 |  | 600°C/1112°F | | |

| CUSTOM PRODUCTS | | MINIMUM ORDER 10 BOXES | | |
|-----------------|---|--------------------------|-------------|--|
| REF | INITIAL COLOUR | COLOUR CHANGES AS BELOW: | | |
| 225 |  | 225°C/437°F | 320°C/608°F | |
| 300 |  | 300°C/572°F | | |
| 470 |  | 470°C/878°F | | |

N.B. colours shown are an indication only of the colour change properties and are reproduced as accurately as will allow

The information in this brochure is correct at the time of publication. However, as we are continually revising our product range, specifications are subject to change and the information here should not be relied upon by an individual customer unless specifically confirmed by us before an order is placed. None of the products featured are manufactured for or held out as suitable for use in spacecraft, satellites, their launch vehicles or other aerospace applications and any customer wishing to purchase products for such use should make specific enquiries.



BS EN ISO 9001:2008
CERTIFICATE NO:FM 35672